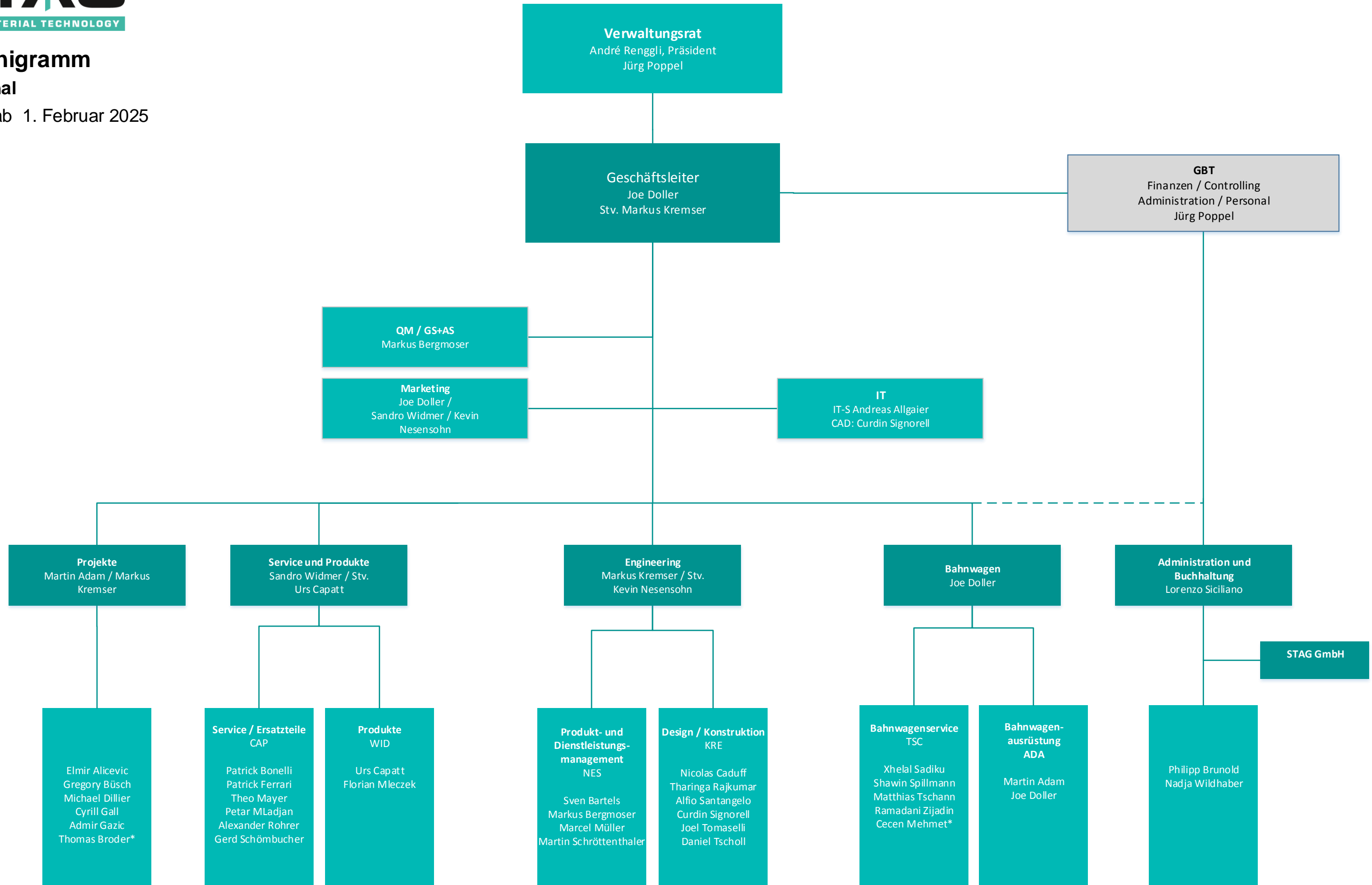


Organigramm

Personal

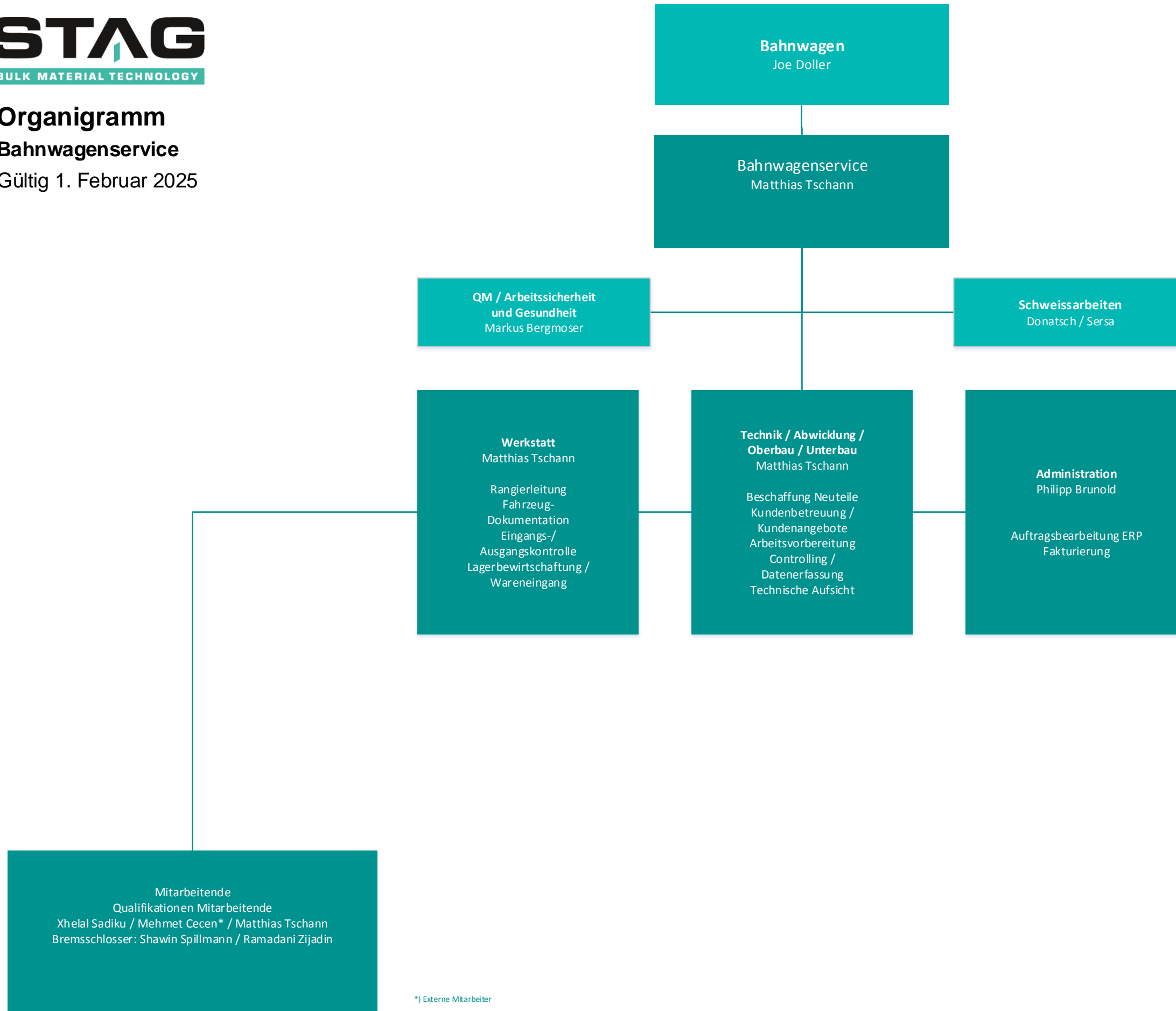
Gültig ab 1. Februar 2025



*) Externe Mitarbeiter

**Organigramm
Bahnwagenservice**

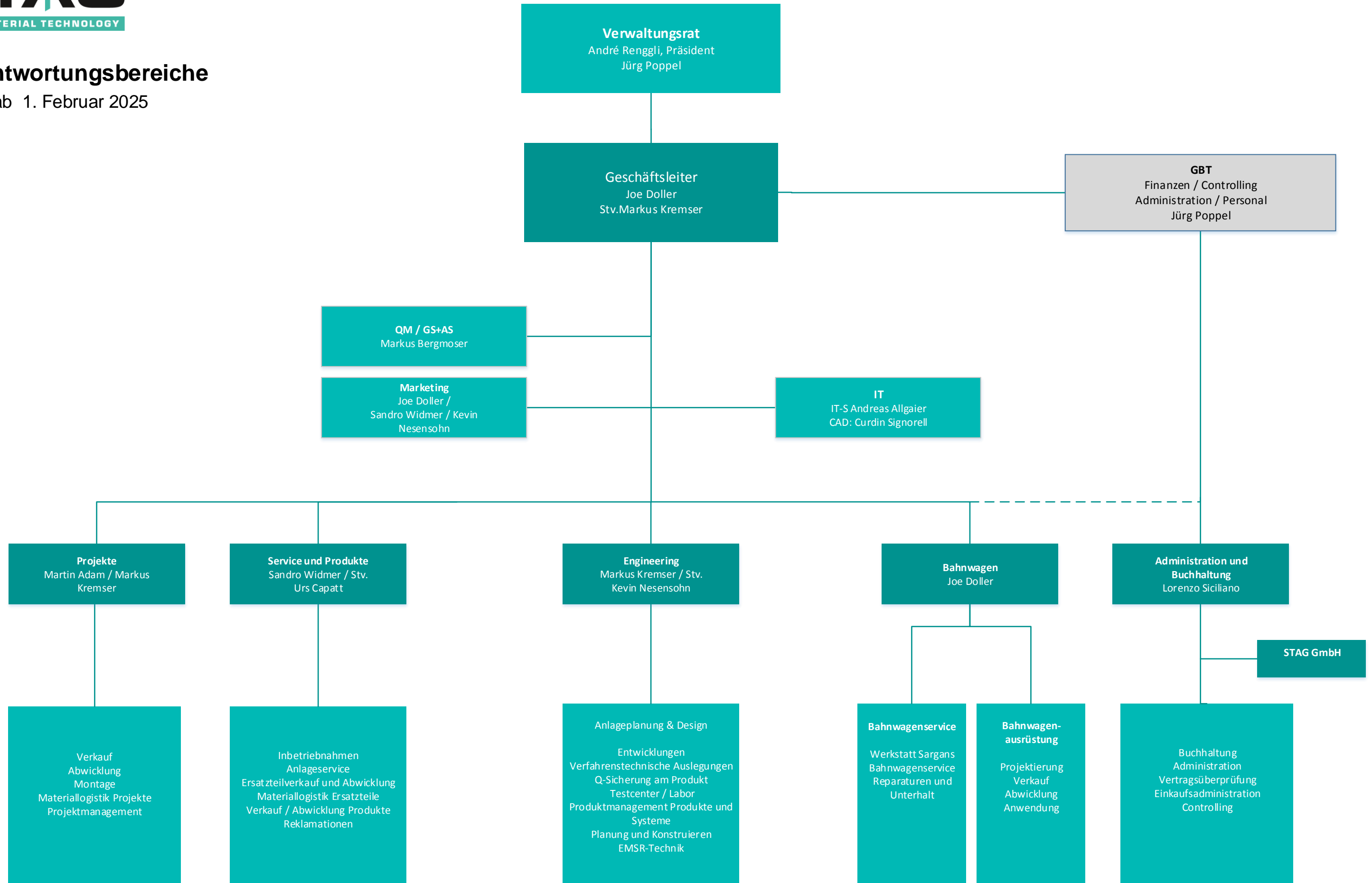
Gültig 1. Februar 2025



*] Externe Mitarbeiter

Verantwortungsbereiche

Gültig ab 1. Februar 2025



Areas of Responsibility

Valid February 1, 2025

