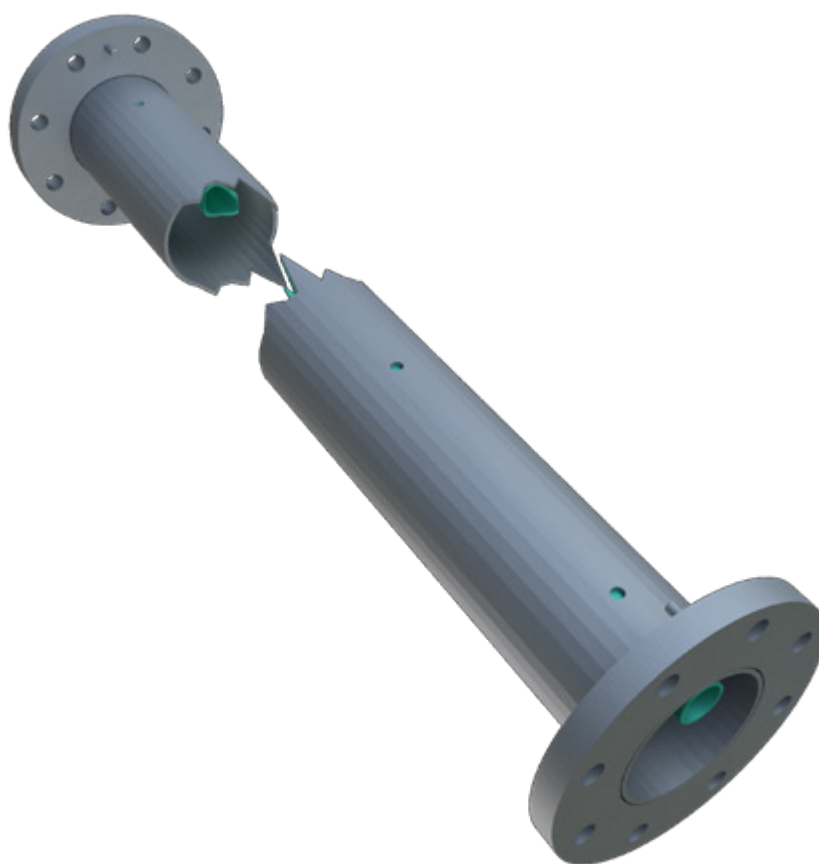


## Dense Flow Pipe «Dense Flow»

Powdery bulk solids

---



---

STAG «Dense Flow»: The technically and economically advantageous solution for dense-phase conveying of powdery bulk materials through pipes. A secondary air supply line with openings is located in the upper section of the conveying line. This design prevents or automatically eliminates blockages.



### Function

Pipe wear is significantly lower thanks to the low conveying speed. It is possible to work at only half the conveying speed of conventional pressure conveying with smooth pipes. With conventional conveying, the longer the pipe, the greater the flow irregularity, which increases the wear on the pipe.

---

### Experience

- Over 100 conveyor lines installed
- Over 6000 m in total

### USPs

- Low wear
- Easy to retrofit
- Energetically optimized

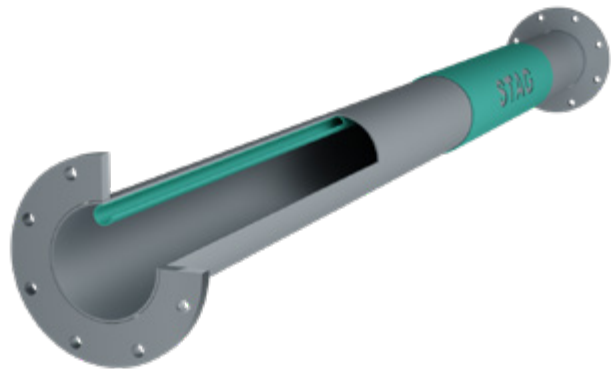
### Application

- High bulk density
- Abrasive bulk materials
- Long conveying distances

### Industries

- Power plants
  - Steel mills
  - Building materials industry
  - Paper industry
  - and many more
- 

### Dense Flow Pipe «Dense Flow»



---

### «Dense Flow Extreme»

(with ceramic inserts against high wear)

