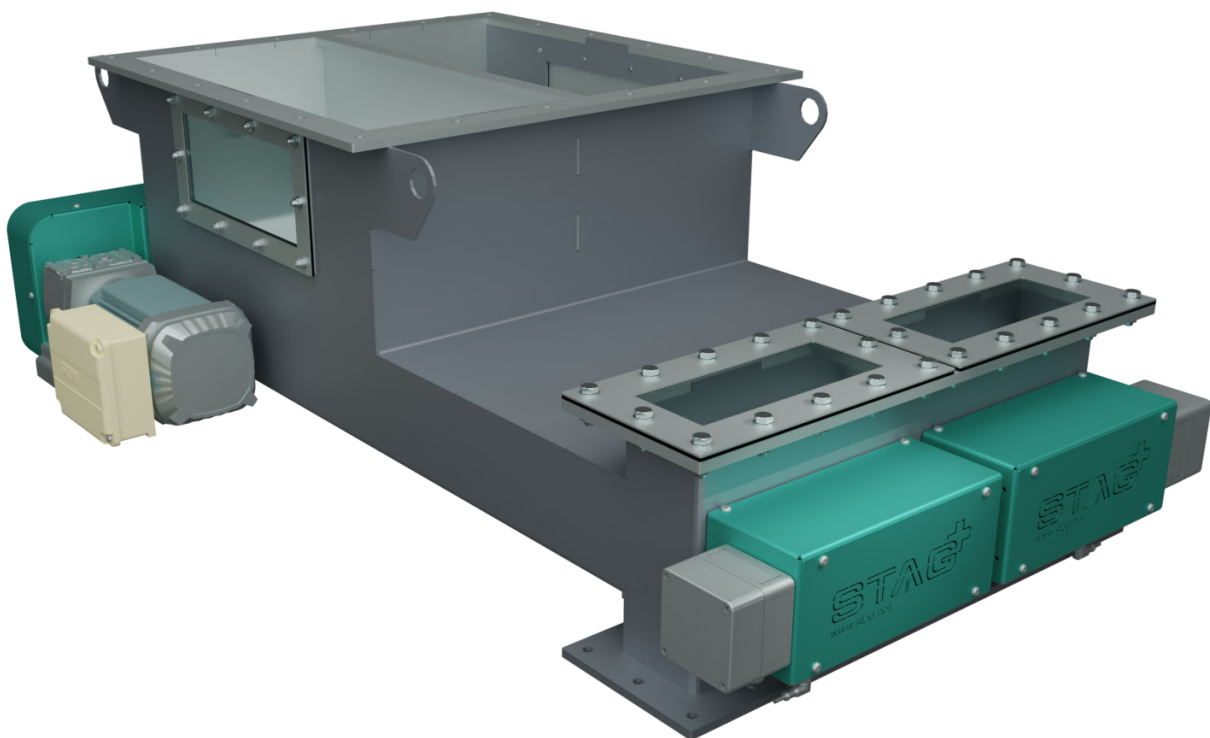


Multi Srew Dosing Unit

Volumetric dosing



The STAG Multi Srew Dosing Unit is a welded construction with an integrated dosing screw helix. This design ensures precise volumetric dosing via the speed and a unique calibration.



Function

The same amount of material is conveyed to the outlet opening with each revolution of the dosing screw helix. The Multi Srew Dosing Unit feeder is supplied with a complete drive system comprising motor and gearbox.

Experience

- In-house development in STAG's own Test Center
- Several field trials at our customers worldwide
- On the market since 2023 and 20 units already sold

Industries

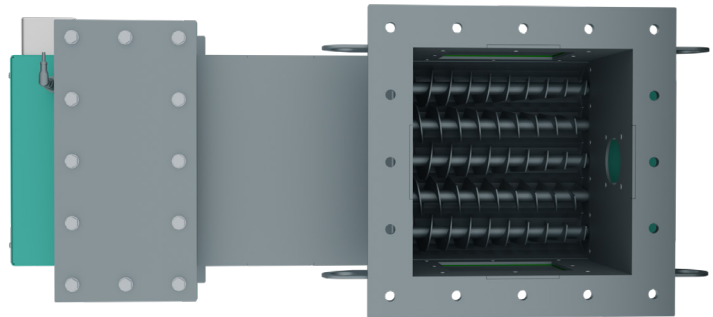
- Waste to Energy
- Power plants
- Building materials industry
- and many more

USPs

- Precise dosing
- Easy maintenance and accessibility to the individual parts
- Customer-specific adaptations to the required delivery rate possible

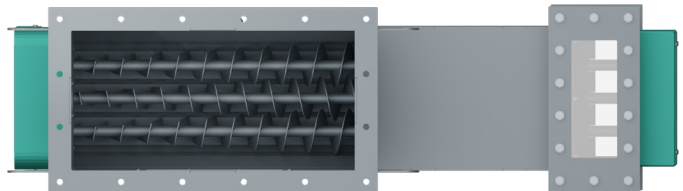
MDV E5

(inlet: 300 × 300 mm)



MDV E3

(inlet: 620 × 305 mm)



MDV D33

(inlet: 620 × 620 mm)

