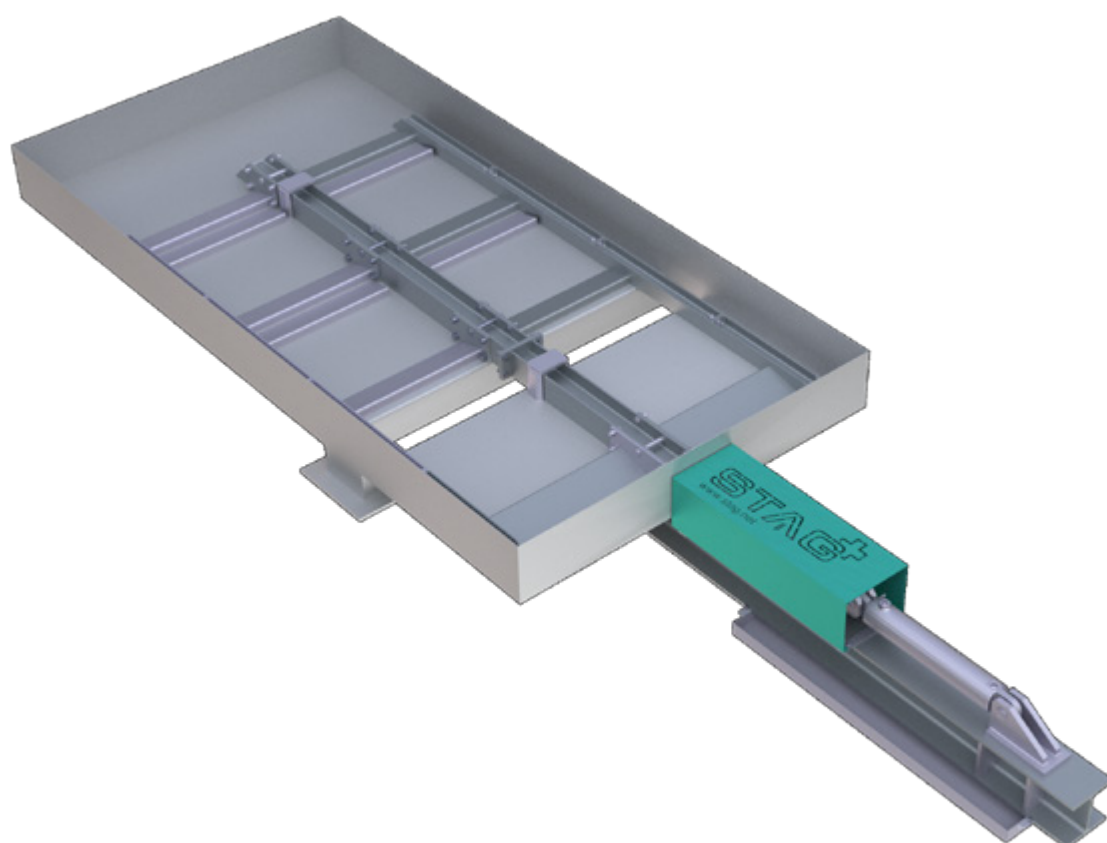


## Push Floor

Heavy-flowing bulk materials

---



---

The moving floor is particularly suitable for heavy-flowing bulk materials through to pasty products such as sewage sludge. The range of applications is extremely diverse. Especially for the storage of alternative fuels (animal meal, sewage sludge, waste wood, bark waste, etc.) but also other products, this system impresses with its simple operating principle, high reliability and operational safety. The moving floor is used in rectangular bunkers or in silos with a round design.



### Function

The Push Floor for silos consists of an oval sliding frame, the push rod and the hydraulic cylinder with hydraulic unit. The hydraulic cylinder moves the sliding frame back and forth on the floor of the silo. The shape of the sliding frame is designed in such a way that bulk material is continuously fed to the discharge opening with every movement. In most cases, a screw or trough chain conveyor is connected to the discharge opening, which transports the discharged bulk material away.

---

### Experience

- Wood chip discharge in paper mills
- Reactor discharge in waste-to-energy plants
- Bunker discharge Wood-fired power plant
- Silo discharge Alternative fuels Cement works

### Industries

- Wood-fired power plants
- Waste-to-energy plants
- Sewage sludge utilization

### USPs

- Robust design
  - Variable sizes
  - Discharge in mass flow, no bridging
  - Low wear and tear
  - Low maintenance effort
  - Variable discharge capacity by adjusting the stroke cycle speed
- 

### View from the side



### View from above

