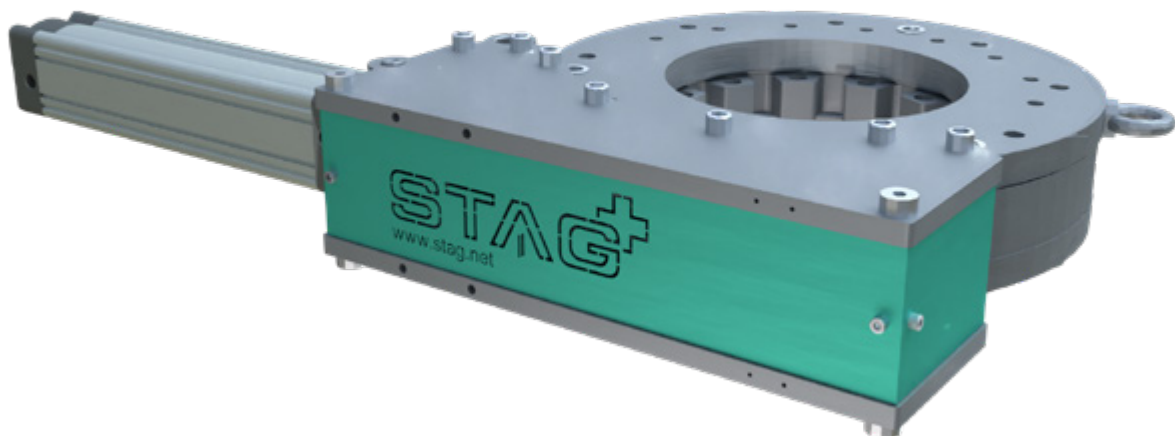


Silex

Mechanical discharge aid



The «Silex» mechanical discharge aid is used for bulk materials that are difficult or impossible to fluidize. It is installed in silos, bunkers and containers of round or square design. Due to its low height and simple mode of operation, retrofitting in existing silos and containers is usually possible without major conversion work.



Function

With very little effort, the Silex guarantees an amazing effect in preventing bridging and core flow. The system works with an oscillating rotary movement. Steel chains are attached to the drive unit. The steel chains are fixed to the upper edge of the cone. Due to the oscillating movement, they act like knives between the silo wall and the bulk material. This prevents any bridging, as the flow of forces from the bulk material to the silo wall is interrupted.

Experience

- Over 50 in use

USPs

- Size connection DN350 and DN600
 - Dimension connection outlet DN200 – DN600
 - Low construction
 - Closed, dust-tight design
 - Temperature resistant up to 200° C
 - For unlimited silo sizes
 - Easy to retrofit
-

Sectional view



Top view of the drive unit

