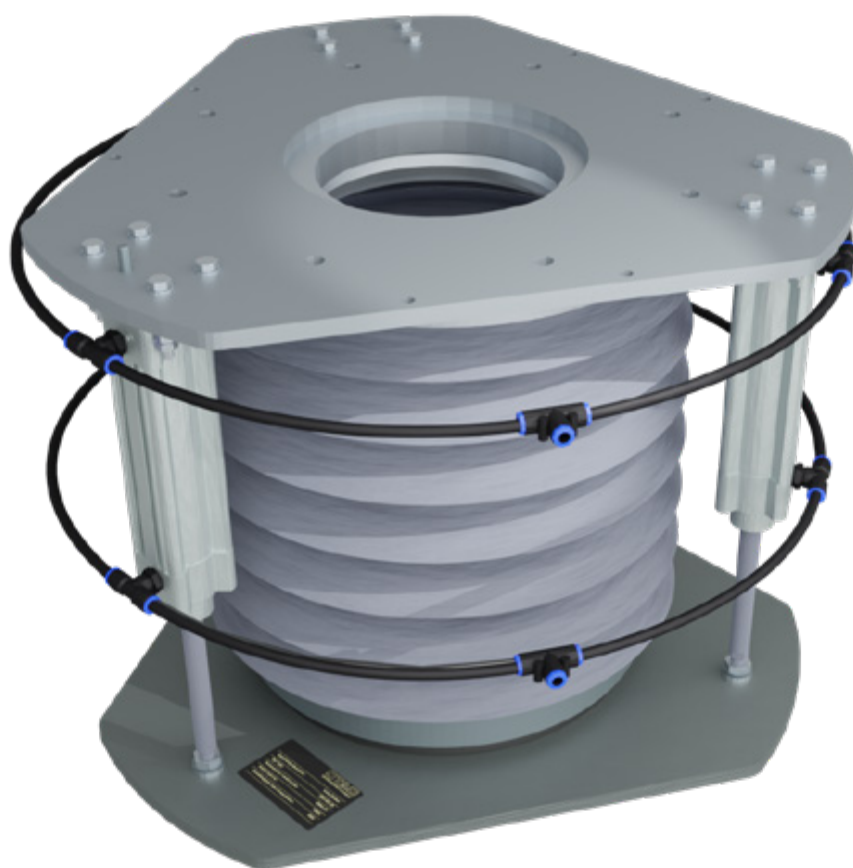


## Filling adapter

Wide range of applications

---



---

The Filling Adapter can be used for a wide range of applications. STAG uses it for the emergency discharge of ash removal systems, among other things. We always use the Filling Adapter for loose and dust-free loading into containers or similar receptacles.



**Function**

The Filling Adapter can be permanently connected to the lid or used as a stand-alone unit. The Filling Adapter is lowered and the connection to the container is established via a two-hand control. The lifting movement is controlled by three pneumatic cylinders distributed around the circumference. A flat elastomer ring seals the connection dust-free.

---

**Experience**

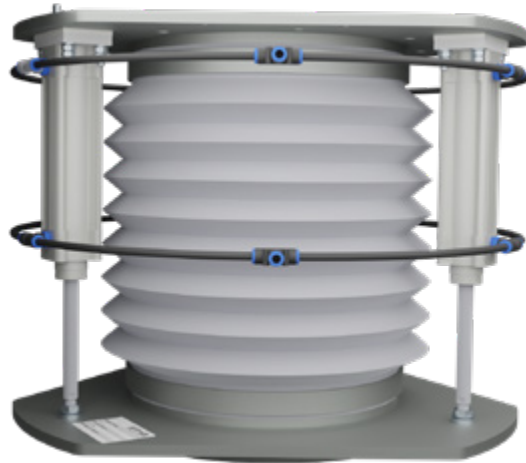
- Over 50 in use
- Special version with integrated container lid

**USPs**

- Closed, dust-tight design
  - Can be used up to 180° C
  - Simple two-hand control
  - Three pneumatic cylinders for a smooth lifting movement
  - Expandable with special STAG container and control unit
- 

**Industries**

- Waste-to-energy plants
- Cement industry
- Paper industry
- Power plant industry
- And many more

**View from the side****View from above**