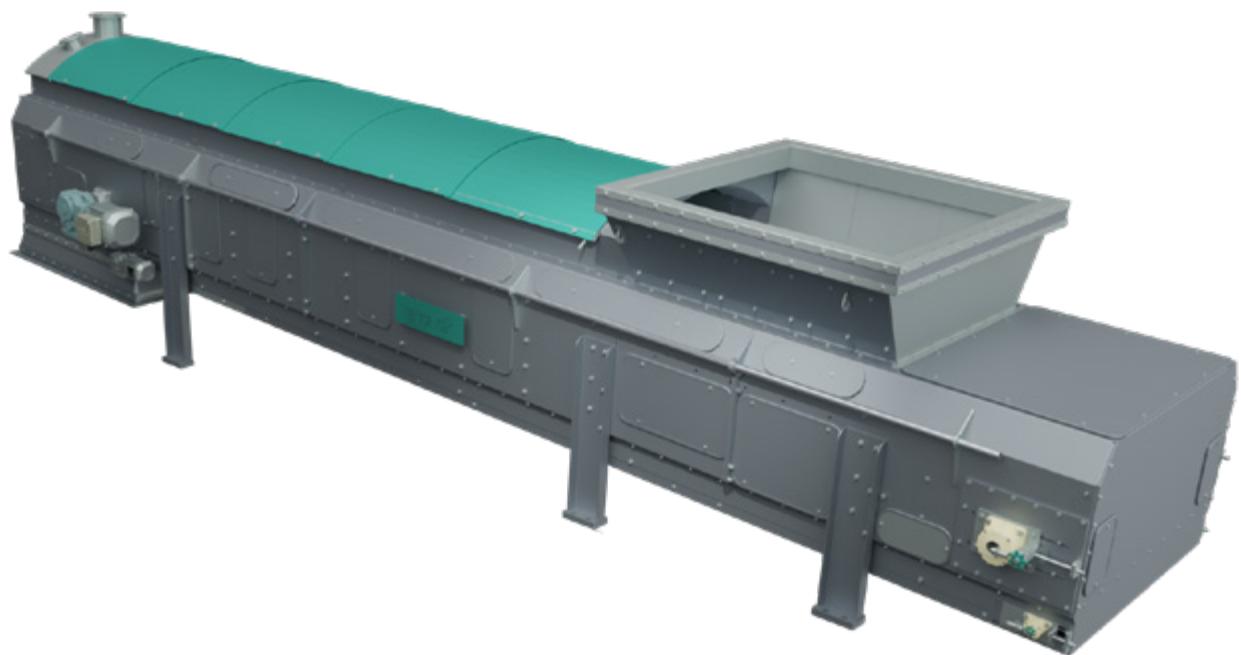


Belt Conveyor Closed

Dust-free material conveying



The closed Belt Conveyor for dry slag and similar bulk materials is an innovative solution for dust-free material conveying. With its closed design, it effectively minimizes dust emissions and ensures a clean working environment.

The precise conveying enables effective disposal and recycling processes, while the durability of the conveyor belt provides a sustainable solution for the industry.



Function

The dust-tight Belt Conveyor offers an efficient solution for handling slag material, for example. With special seals and a robust design, it prevents dust from escaping and ensures a clean working environment.

With this design, the Belt Conveyor can be operated in a slight vacuum. Suction nozzles provided at the transition points form the interface to the dust extraction system. The integrated scraper floor is switched on periodically and conveys the dust and other deposits to the discharge point in the downstream unit.

Experience

- 30 pcs. FB at KEZO Hinwil (ZAV)
- 3 pcs. FB at ERZ Hagenholz
- 2 pcs. FB at KVA Horgen

Industries

- Waste-to-energy plants Slag handling
- Steel industry
- Cement industry
- and many more

USPs

- Closed design, dust-tight
 - Self-cleaning due to scraper floor
-

View from the side



View from above

