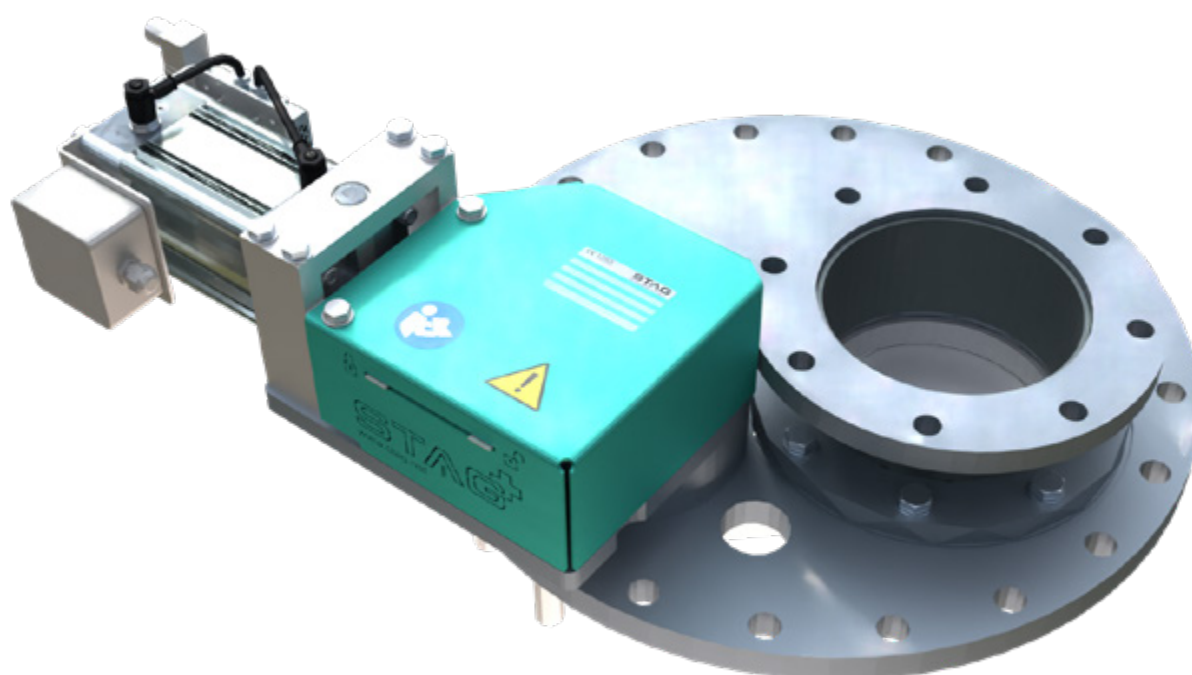


## Turn Slide Valve MVP

Pneumatic conveying

---



---

The one-sided sealing turn slide valve has been especially designed for pneumatic conveying as part of the STAG pressure conveying vessel technology. No other system can satisfy the high demands of this application. The turn slide valve, suitable for pressure conveying vessels as well as for any kind of bulk material, is a pressure-proof inlet device ensuring the system's long-term functionality.



### Function

A special mechanism generates a rotational movement of the valve plate when the valve opens and closes. This prevents the metal sealing surfaces from shrinking – at the same time, the tightness increases with the number of cycles. The metal sealing surfaces are in contact with each other in every valve position. Deposits on the sealing surface are cleaned by the sharp-edged slide plate.

---

### Experience

- Over 1000 pieces Standard version 200° C
- Over 100 pieces High temperature version 200 – 400° C

### USPs

- Functional reliability thanks to special design
- Easy replacement of wearing parts
- Low overall height
- Long service life
- Metallic sealing
- Pressure-tight up to 6 bar (g)
- Closing and opening time < 1 sec

### Industries

- Power plants of all kinds
- Cement plants
- Steel mills
- Mixed plaster production
- and many more

---

### View from the side



---

### View from above

